

Rohinson[®]

INNOVATE FOR LIFE



Thank you for buying a Rohinson cordless stick vacuum cleaner with digital brushless motor (BLDC)



MAMBA light

** Scan with your phone or QR reader to find out more about your machine

SAFETY INSTRUCTIONS

The vacuum cleaner is specially used for household purpose, please do not use it for commercial or other purposes.

1. Please don't use the vacuum cleaner to suck detergent, kerosene, glass waste, needles, cigarette ash, moisturized dust, sewage, matches, similar articles or any liquid.
2. Please do not use the vacuum cleaner to suck cement, gypsum powder, wall power and similar small particles, or toy, paper filler and other larger objects, which can cause vacuum cleaner clogging, motor burnout and another fault.
3. Please do not use the vacuum cleaner near fire source and other high temperature places.
4. When the vacuum cleaner is used, please pay attention to install HEPA properly before operating the unit.
5. When the vacuum cleaner is used, please note that the suction inlet cannot be clogged, otherwise motor failure may be caused.
6. Please do not dump or splash water or other liquid into the machine, to avoid short-circuit and burn-out of machine.
7. When cleaning the vacuum cleaner filters, please remove and wash them with water **if recommended by the manufacturer**; when you need to use them, please install the dried filters into the vacuum cleaner. Do not use the wet filters, otherwise it may burn out the machine due to the short-circuit.
8. Please use dry cloth for cleaning vacuum cleaner, do not use gasoline, banana oil etc. otherwise shell cracking or fading will be caused. Please do not use and store the machine in extremely adverse conditions, such as extreme temperature. Use the vacuum cleaner in room temperature of 5°C~ 40°C. Please store it in a cool and dry place. Sunlight exposure for long time should be prohibited.
9. Make sure that the mains voltage matches the voltage stated on the rating label of the appliance and that the outlet is grounded.
10. Do not use the device if it has been dropped or if there are any visible signs of damage.
11. Do not try to repair the appliance by yourself. Contact our official technical support service.
12. Do not use any accessory that has not been recommended by the manufacturer, as they might cause injuries or damage.
13. Turn off and unplug the appliance from the mains supply when it is not going to be used for a long period of time, before cleaning or repairing, before attaching components and before removing the battery.
14. Never modify the charger in any way.
15. Do not use any battery that has not been provided with the original product.
16. The appliance is not intended to be used by children under the age of 12. It can be used by children over the age of 12, as long as they are given continuous supervision.
17. This appliance is not intended to be used by persons with reduced physical, sensory or mental capabilities or lack of experience or knowledge unless they have been given supervision or instruction concerning the use of the appliance in a safe way by a person responsible for their safety and understand the hazards involved.
18. Supervise young children to make sure that they do not play with the appliance. Close supervision is necessary when the appliance is being used by or near children.

BATTERY INSTRUCTIONS

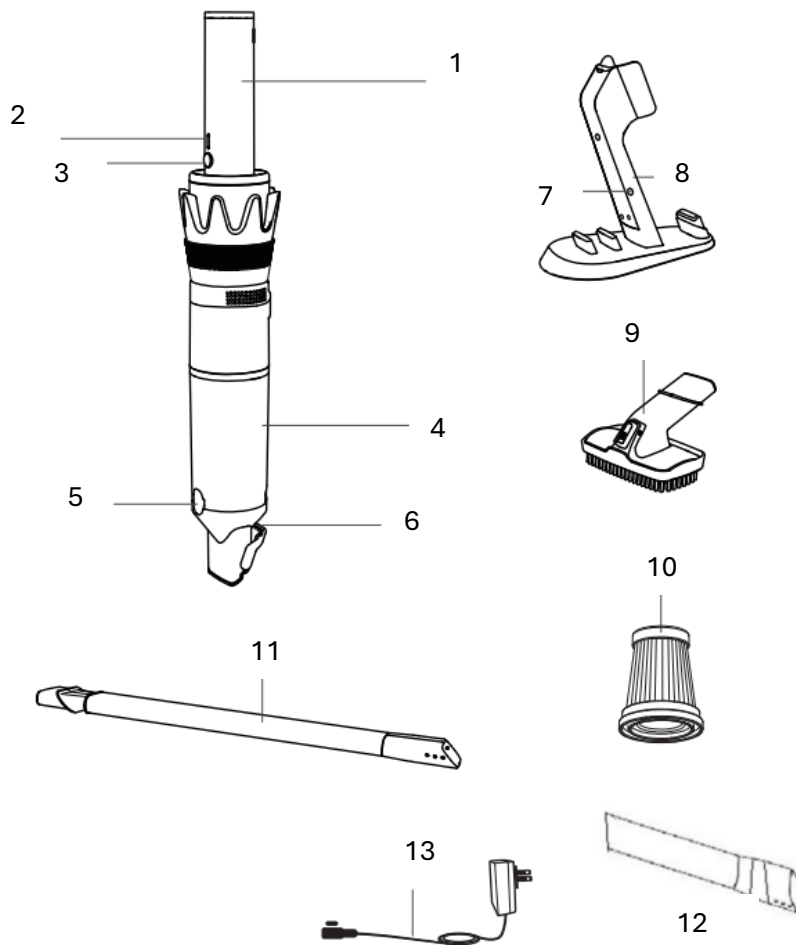
-This appliance includes Li-ion batteries, do not incinerate or expose them to high temperature, as they may explode.

-Leaks from the battery or battery cells can occur under extreme conditions. Do not touch any liquid that leaks from the battery. If the liquid gets into contact with skin, wash immediately with soap and water. If the liquid gets into the eyes, flush them immediately with clean water for a minimum of 10 minutes and seek medical attention. Wear gloves to handle the battery and dispose of immediately in accordance with local regulations.

-Avoid contact between the battery and small metallic objects such as paper clips, coins, keys, nails or screws.

-Before a new battery is used or the battery is used for the first time after long-term storage, fully charge the battery. When the device is stored and not used for long periods of time, ensure that the battery pack is fully charged and ensure that the battery is charged and discharged at least once every three months.

PRODUCT COMPONENTS

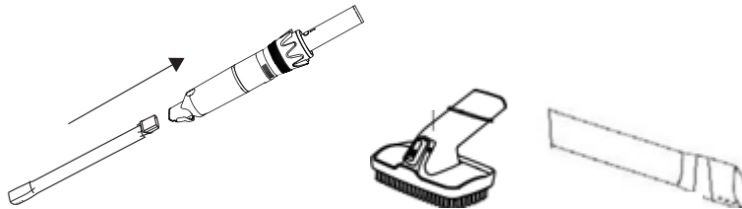


1. Handle
2. Indicator
3. Power switch / Speed switch
4. Dust cup
5. Dust cup release button
6. Small brush
7. DC charging port
8. Charging dock
9. 2 in 1 upholstery nozzle for sofas and pet hairs
10. HEPA
11. Long crevice nozzle
12. Narrow crevice nozzle
13. Adapter

ASSEMBLING AND DISASSEMBLING

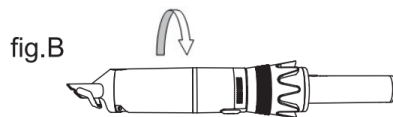
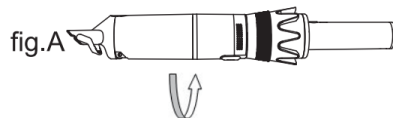
Attachments Installation

When you begin to use the vacuum cleaner, please connect 2 in 1 upholstery nozzle or long crevice nozzle or narrow crevice nozzle to the vacuum cleaner first, as the picture shows.



Dust cup removal and installation

- Remove dust cup from body: rotate the dust cup in the direction shown, then take out the dust cup from body (fig.A)
- Install dust cup on body: rotate the dust cup in the direction shown (fig.B)



NOTE: Always remove the plug from power socket before fitting or removing accessories!

CHARGING THE BATTERY

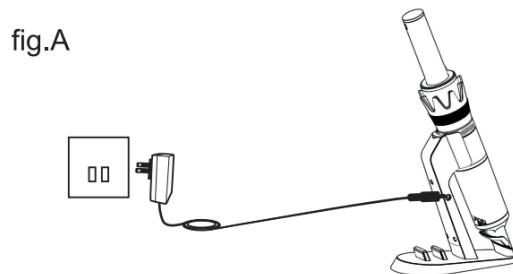
Charging Methods

The vacuum is powered by the built-in lithium battery. Before first use, charge the battery for at least 3-3.5 hours.

The vacuum cannot work while charging.

The vacuum cannot be charged when the ambient temperature is below 10°C/50°F or above 45°C/113°F.

Method 1:



- (a) Insert the DC plug into the DC charging port on charging dock first, then plug the adapter into power socket for quick charging (fig.A)
- (b) The green indicator breath flashes during charging, once the vacuum cleaner is fully charged, the green indicator will stop flashing and be constant on.
- (c) Indicator shows green in standard mode (low speed) after you power it on and shows blue in powerful model (high speed). Green and blue indicators flash alternately when in low battery state.

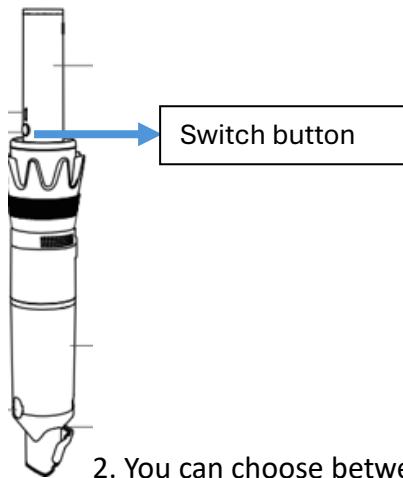
Method 2:

- (a) The machine can be pulled out of the charging dock and charged separately.

NOTE: Only charge with the provided adapter.

OPERATION METHOD

1. Press the switch button, the machine will start to work. Press the button again to shut down the machine.



2. You can choose between the different suction power by touching the switch button.

Touch once for low suction level (runtime up to 25 min)

Touch twice for high suction level (runtime up to 17 min)

CLEANING AND MAINTANANCE

When the filters are blocked due to excessive dust, they must be cleaned and if necessary, they can also be replaced. To ensure maximum efficiency, it is suggested to clean the filters regularly (at least twice a month) and to replace the filters at least once a year. Both cleaning and replacement depend on use. More frequent cleaning may be required when vacuuming fine dust or using the machine intensively.

How to clean

Fig.A

- (a) Without removing the dust cup, press the dust cup release button directly, then dump the dust into trash can (fig.A)

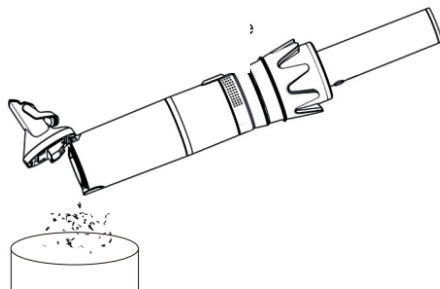


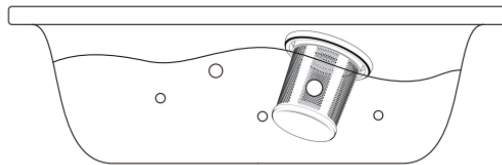
Fig.B

- (b) Remove the dust cup from the body, press the dust cup release button directly to empty the dust (fig.B)



Fig.C

- (c) You can use water to clean the dust cup and HEPA filter, but please dry them completely before installing back (fig.C)

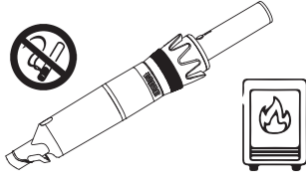


TIPS:

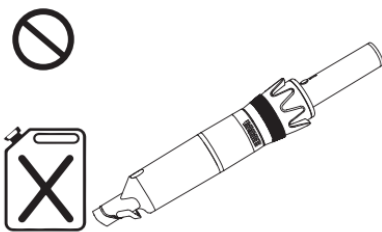
1. Press down the dust cup release button after cleaning to pour trash and dust out, then take out stainless steel filter and white HEPA to clean. You can install them back after drying completely. (Note: there should be no water droplets and blockages at the suction port in the dust cup, or the machine is easily damaged and cannot work normally).
2. Before each use, please make sure the dust cup is clean and has no other objects in the suction port to prevent the machine from not working normally.
3. You can use the extra HEPA we provide if the original HEPA is damaged caused by incomplete drying or long-term use.

PRECAUTIONARY MEASURES

1. If the suction part is blocked, please turn off the vacuum cleaner immediately. Please remove the blockage first before you use it again.
2. Do not operate the vacuum cleaner near devices that can generate heat like heaters, radiators or cigarette butts.



3. Before you start using the vacuum cleaner, please remove large or sharp objects from floor in order to avoid damage. Do not use it to clean flammable items such as gasoline and cigarettes.



TROUBLESHOOTING GUIDE

Switch off the appliance and disconnect the mains plug before addressing any faults!
Failure to do so may result in injury or electric shock.

Problems	Possible reasons	Possible solutions
It does not work	<ol style="list-style-type: none"> 1. The battery runs out 2. Machine malfunction 	<ol style="list-style-type: none"> 1. Charge with power adapter 2. Take it to maintenance shop for repair
The suction is weak or cannot pick-up	<ol style="list-style-type: none"> 1. Dust cup is full 2. HEPA filter needs cleaning 	<ol style="list-style-type: none"> 1. Clean the dust cup (see above) 2. Remove the HEPA filter from dust cup to clean up, clean with water if necessary
Dust escaping from the vacuum cleaner	<ol style="list-style-type: none"> 1. Dust cup is full 2. The HEPA filter is not installed correctly 3. There are cracks on dust cup 	<ol style="list-style-type: none"> 1. Empty the dust cup 2. Place the HEPA filter correctly 3. Replace the dust cup

TECHNICAL SPECIFICATIONS:

MODEL: Rohson mamba light M3

BATTERY: Li-Ion 14.8V, 2600mAh

POWER: 120W

DIGITAL MOTOR (BLDC motor)



IMPORTANT INFORMATION FOR CORRECT DISPOSAL OF THE PRODUCT IN ACCORDANCE WITH EC DIRECTIVE 2002/96/EC.

At the end of its working life, the product must not be disposed of as urban waste. It must be taken to a special local authority differentiated waste collection center or to a dealer providing this service. Disposing of a household appliance separately avoids possible negative consequences for the environment and health, deriving from inappropriate disposal and enables the constituent materials to be recovered to obtain significant savings in energy and resources. As a reminder of the need to dispose of household appliances separately, the product is marked with a crossed-out wheeled dustbin.