

# *Rohinson*<sup>®</sup>

## Instructions Manual **Multi Capsule Coffee Machine R-98041**



Please read this Instruction Manual and the safety instructions before operating the appliance!

# Safety Precautions

---

**Please take time to read these safety precautions carefully before connecting your machine to the power supply. It is essential to follow them and the operating instructions.**

- First read this entire operating manual.
- Danger of electric shock! Never immerse the machine in water or any other liquid.
- Connect only to a properly grounded power point.
- To make sure that the machine is switched off, remove the plug from the power point.
- Always pull out the power plug before:
  - Relocating the machine.
  - Cleaning or maintenance.
  - Long periods of disuse.
- Never clamp or run the power cable over sharp corners or edges.
- Danger of electric shock! Damaged power cables may only be replaced at the customer service center.
- Danger of electric shock! Never touch the power plug/socket/cable or the machine with damp or wet hands. Never unplug by pulling out the power cable; always remove the plug.
- If you need an extension cable, make sure it is suitable for your machine (3-pole grounded, 1.5 mm<sup>2</sup> conductor cross-section), and lay the cable to avoid tripping.
- Danger of scalding! Never move the machine during operation!
- Do not use the machine in case of:
  - \* Faulty operation.
  - \* Damaged power cable.
  - \* After falling or other damage.
  - \* In such cases immediately have the machine checked and repaired, if necessary, at the customer service center.
- The machine location must meet the following requirements:
  - \* Choose a dry, stable, and level support surface not immediately underneath the power point, at least 60 cm away from the washbasin and taps.
  - \* Never place on flammable/fusible surfaces or equipment.
  - \* Never place the machine or power cable on or nearer than 50 cm to hot surfaces or open flames.
  - \* Never cover the machine during operation.
- Keep children away from the machine during operation.

- Only use the machine in dry rooms.
- Danger of tripping! Do not let the power cable hang down.
- This machine is only intended for household use.
- Pull out the power plug and allow the machine to cool down completely before cleaning and or Maintenance.
- To prevent damage, never use replacement parts or accessories not recommended by the manufacturer.
- This appliance can be used by children aged from 8 years and above if they have been given supervision or instruction concerning use of the appliance in a safe way and if they understand the hazards involved. Cleaning and user maintenance shall not be made by children unless they are older than 8 and supervised. Keep the appliance and its cord out of reach of children aged less than 8 years.
- Appliances can be used by persons with reduced physical, sensory or mental capabilities or lack of experience and knowledge if they have been given supervision or instruction concerning use of the appliance in a safe way and understand the hazards involved. Children shall not play with the appliance.
- This appliance is not intended for use by persons (including children) with reduced physical, sensory or mental capabilities, or lack of experience and knowledge, unless they have been given supervision or instruction concerning use of the appliance by a person responsible for their safety. Children should be supervised to ensure that they do not play with the appliance.
- If the supply cord is damaged, it must be replaced by the manufacturer, its service agent or similarly qualified persons in order to avoid a hazard.

## Important Tips

---

- Never operate the machine without water.
- Always make sure there is water in water tank not less than minimum level.
- Danger of burning! Never touch very hot parts of the machine (e.g. brew unit during operations).
- Danger of scalding! Do not touch the steam or water jets.
- Danger of scalding! Do not move the operating lever when the machine is still under pressure making Coffee.
- The appliance must not be immersed.
- Caution! There is potential injury from misuse.
- Heating element surface is subject to residual heat after use.
- Coffee maker shall not be placed in a cabinet when in use.
- Cleaning and user maintenance shall not be made by children without supervision.
- This appliance is intended to be used in household and similar applications such as:
  - \* Staff kitchen areas in shops, offices and other working environments;
  - \* Farm houses;
  - \* By clients in hotels, motels and other residential type environments;

\* Bed and breakfast type environments.

## Notes on This Operating Manual

---

This operating manual cannot cover all possible circumstances. For further information or in case of problems not adequately covered in this operating manual, please contact the service and sales centre.

Please keep this operating manual safe and pass it on to the next user.

## Unpacking

---

- Remove your espresso Capsule coffee machine from its packaging.
- After unpacking, please check that the following parts are included:
  1. Water tank
  2. Coffee machine
  3. Manual (Guarantee Card)
  4. 4 coffee capsule adapters + 2 stainless steel pockets (one in the machine)
  5. Coffee spoon
  6. Air pump

### **Note:**

- Check that your home power supply voltage is the same as marked on the machine rating plate.
- Destroy all the plastic bags to prevent danger to children!

### **Tip:**

Keep the packaging for transporting the machine (e.g. for removals, servicing, etc.)

### **Note:**

You may find a little water remaining in the machine. In order to ensure that this machine works perfectly, it was tested with water before leaving the factory.

- DANGER OF FROST

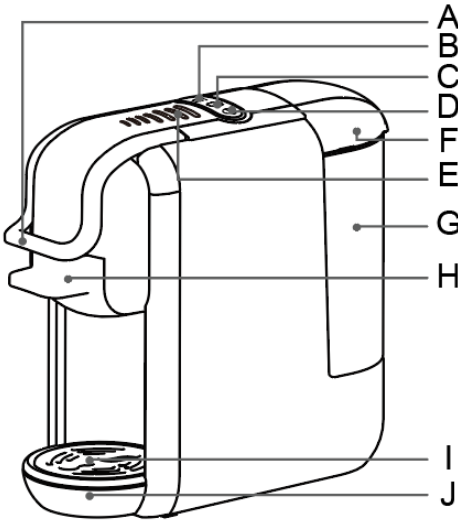
# Starting up

Before using for the first time.

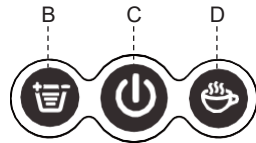
**Caution:** Improper handling of electrical equipment is dangerous and can be lethal. Please pay attention to the safety precautions in this manual, in particular the following:

- Danger of scalding: beware of hot water!
- Do not operate the machine with an empty water tank or water is less than MINIMUM level.
- Do not open the handle when the machine is brewing.
- Always pull out the power plug before cleaning the machine.
- Only use the machine in a dry room.
- Thoroughly rinse out the water tank with fresh water before using for the first time. Clean the Capsule coffee machine using a damp cloth only.

## Overview of Machine Parts and Controls



No.	Name
A	Handle
B	Volume button
C	Power button
D	Brew button
E	Volume status light
F	Water tank cover
G	Water tank
H	Coffee Adapter
I	Drip tray cover
J	Water drip tray



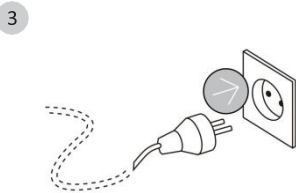
Before using for the first time or after long pauses (e.g. holidays) the machine must be flushed out. This short procedure can flush out and cleans the internal piping thoroughly.

There are two ways to fill the water tank: directly into the machine, by using for example a jug, or by removing the water tank.

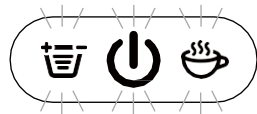
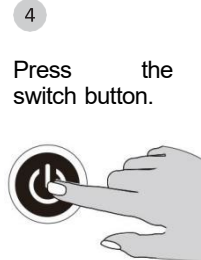
- 1 Filling without removing the tank:
  - Raise the water tank cover.
  - Fill the tank with cold fresh water.
  - The maximum capacity is 0.6 litre.
  - Low down the tank cover.



- 2 Filling by removing the water tank:
  - Hold the water grip at tilting angle as shown in direction to remove the water tank from the machine.
  - Fill the tank up to fill the tank up to the "MAX" mark with cold fresh water (the maximum capacity is 0.6 litre).
  - Slide the water tank slowly on water tank base, when the water tank outlet is inserted in the inlet receptacle, pushing firmly on the water grip as shown in direction to lock the water tank.



Connect the power supply.

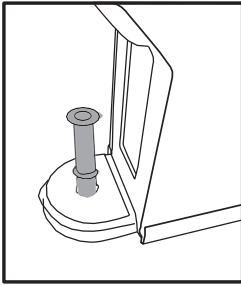


The lights at buttons become steady when the machine is heated up heating up time is 45 seconds approximately.

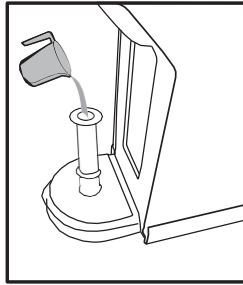
- 5 Press the brew coffee button, wait for the appliance to complete the flush out.
  - Before pressing the button, make sure that:
    - the handle is closed without capsule inside.
    - the water tank is full.
    - the water tank is firmly in place, otherwise water may leak.
    - a large bowl (250ml size or above) is placed under the dispenser.
  - Press the brew coffee button to start flush out.
  - Open the handle when the flush out process stopped automatically.
  - Empty the cup.
  - Flush out cycle is finished.



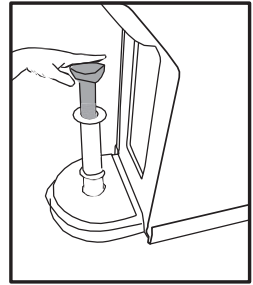
Before using for the first time or after long pauses (e.g. holidays) the machine may be difficult to pump water, this short procedure can help pump to self-priming by using the pipe to fill water into the circuit manually prior to turn on the machine for first refill.



1. Remove the water tank and insert the hose into the water inlet at the bottom of the water tank.



2. Inject a small amount of water into the hose.

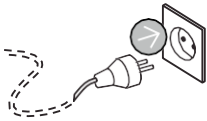


3. Push the pump down to allow water to enter the coffee machine and force the air out of the pipe to make the pipe clear.

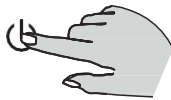
After above steps, the machine will be able to pump water out normally.

\* If necessary, repeat the steps for 2 or 3 times.

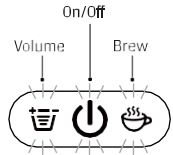
## Hot Drink or Cold Drink Mode



1



2



3

### Hot Drink Mode

1. Connect the device to the main socket, the On/Off button will flash twice in red and twice in blue, indicating power is well connected.
2. One quick press to the ON/OFF button to turn it on in Red light, the Volume button and Brew button will be flashing in blue for 35s about to finish the heating up process.
3. When the Volume button and Brew button stop flashing, the device is ready for hot drink. in this mode, The Volume and Brew are indicated large light and the ON/OFF button is indicated in steady RED light.
4. Press the volume button to set the coffee volume.
5. Press the brew button, the coffee come out.

### Cold Drink Mode

1. Connect the device to the main socket, the On/Off button will flash twice in red and twice in blue, indicating power is well connected.
2. Press the ON/OFF button and hold it pressed (about 2 seconds) until the indication light is turned on in BLUE light.
3. When the device enters in the cold drink mode, all the three buttons are indicated in steady BLUE indication light. In this mode, heater is switched off.
4. Press the volume button to set the coffee volume.
5. Press the brew button, the coffee come out.
6. Tips : add 2-3 pieces of ice cube into the coffee cup for cold drink, or fill in 8-10°C (46-50°F) icy water into the water tank to brew your cold drink.

## COFFEE VOLUME ADJUSTMENT FOR BREW

You can change the amount of coffee by adjusting the default brewing time to suit your taste.

Press the Volume button to adjust the coffee brewing size as per your preference.

The machine will record your selection for next use.

After adjustment, press the Brew button to start brewing.

The brewing process can be cancelled by pressing it again.

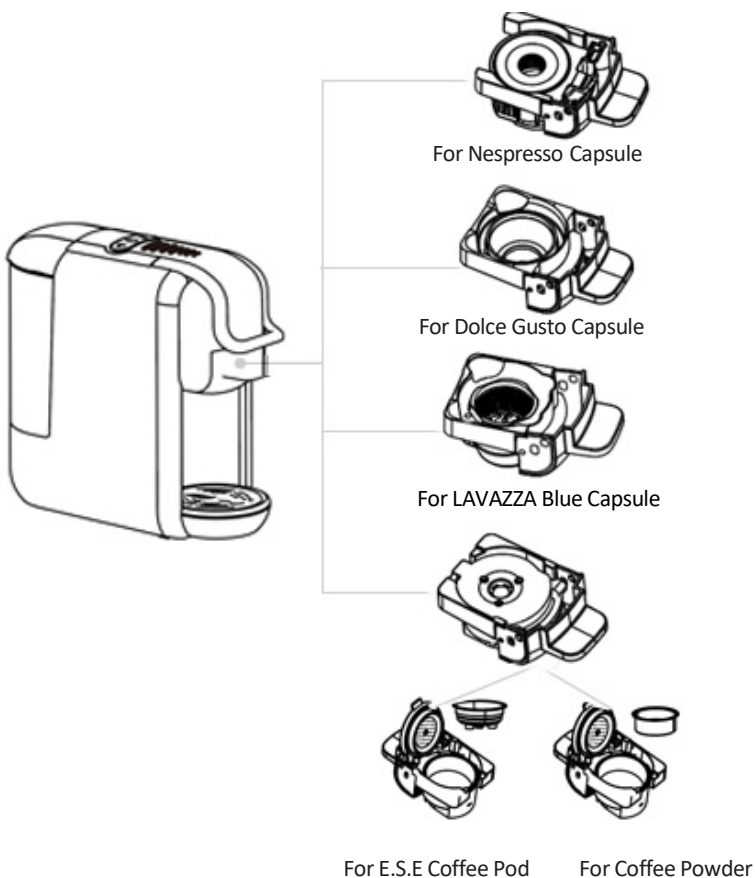


### Attention:

- When the Brew button is pressed, its LED may blink for a few seconds first, and then start brewing coffee, which is normal.
- For best taste, it's strongly recommended to brew a cup of hot water first.



**Tips:** The machine has different adaptor for different capsules, details refer to below:





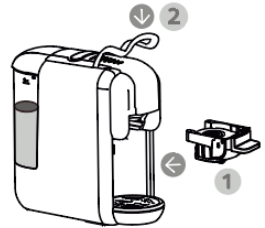
# For Nespresso capsules



- 1 - Open the handle.  
- Pull out the Adapter.



- 2 - Open the Adapter cover lid.  
- Put Nespresso capsule into the Adapter and close down the lid, press the lid with a little force.



- 3 - Insert the Adapter into the machine, make sure you put it into the end, then close the Handle.



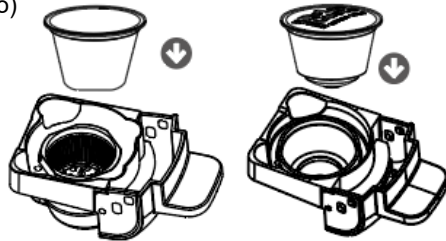
- 4 - Place a cup under the dispenser.  
- Press Power button to turn on the machine. (Wait 20-45 second until all light stop blinking)  
- Press the Volume button to select the desired coffee volume, then press Brew button to start.  
- Lift the Handle and pull out the adapter, dispose the used capsule.  
- Wash the adapter.

## For LAVAZZA Blue (or Dolce-Gusto) Capsule

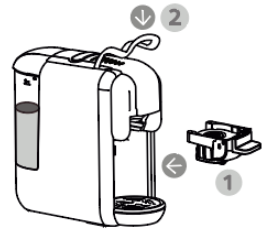
- 1 - Open the handle.  
- Pull out the Adapter.



- 2 Put LAVAZZA Blue (or Dolce-Gusto) capsules into the Adapter.



- 3 Insert the Adapter into the machine, make sure you put it into the end, then close the Handle.



- 4 - Place a cup under the dispenser.  
- Press Power button to turn on the machine. (Wait 20-45 second until all light stop blinking)  
- Press the Volume button to select the desired coffee volume, then press Brew button to start.  
- Lift the Handle and pull out the adapter, dispose the used capsule.  
- Wash the adapter.



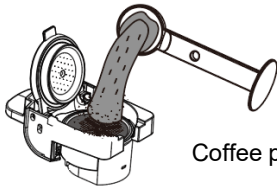
## For Coffee Powder

1

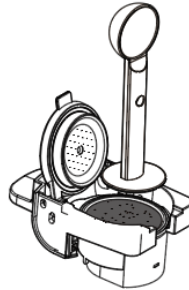
- Open the handle.
- Pull out the Adapter.



2



Coffee powder

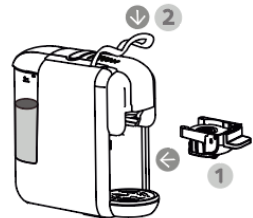


Press down the coffee powder.

**Note:** You must use espresso powder and full, flatten and compact the pods. Ground coffee that is too fine, too coarse, or too little will affect the flavor of the coffee and take too long to drip, as well as unsuccessful extraction.

3

Insert the Adapter into the machine, make sure you put it into the end, then close the Handle.



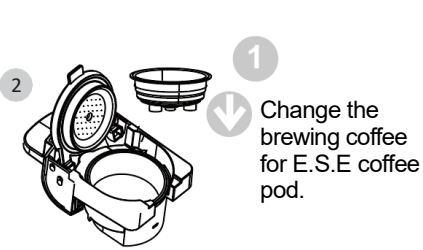
4

- Place a cup under the dispenser.
- Press Power button to turn on the machine. (Wait 20-45 second until all light stop blinking)
- Press the Volume button to select the desired coffee volume, then press Brew button to start.
- Lift the Handle and pull out the adapter, dispose the used capsule.
- Wash the adapter.

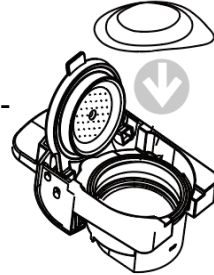


## For E.S.E coffee Pod

- 1 - Open the handle.  
- Pull out the Adapter.

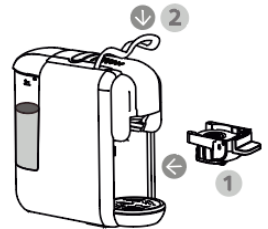


Change the brewing coffee for E.S.E coffee pod.

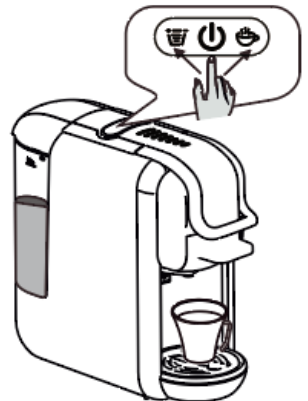


Put the E.S.E coffee pod into the adaptor.

- 3 Insert the Adapter into the machine, make sure you put it into the end, then close the Handle.



- 4 - Place a cup under the dispenser.  
- Press Power button to turn on the machine. (Wait 20-45 second until all light stop blinking)  
- Press the Volume button to select the desired coffee volume, then press Brew button to start.  
- Lift the Handle and pull out the adapter, dispose the used capsule.  
- Wash the adapter.



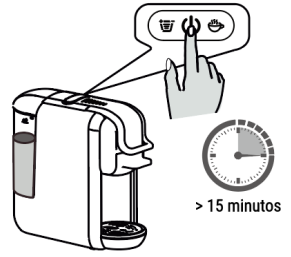
## Standby Mode

### Factory Default setting: Standby Mode

Time: 15 mins

It means the machine will be turned off after 15 inactive mins, and all the indicators' lights will be off.

To press the switch button to cancel the standby mode again if the machine is in Standby mode.



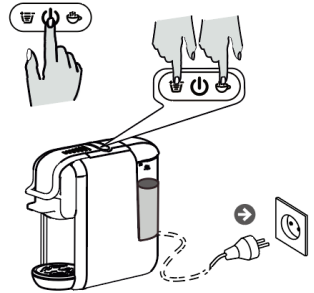
### Standby mode setting

Keep pressing the Volume button and Brew button, meanwhile insert the plug to the socket.

Switch button light will be on.

Press Volume button, Volume button light off, Standby mode canceled.

Press Volume button, Volume button light on, standby mode activated.



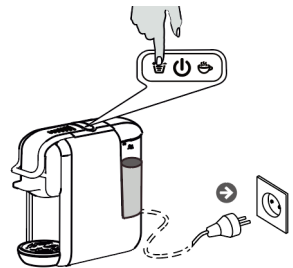
### Clean mode function

Put a cup in front of the machine.

Put some detergent into the water tank.

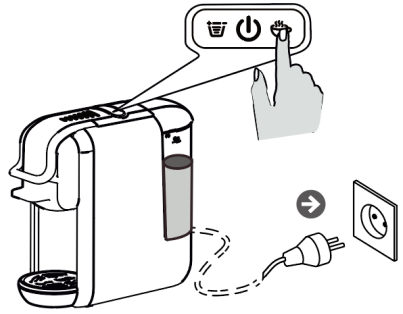
Press the Volume button and connect the power at the same time.

The switch button and Volume button are lighted, then press the Volume button Start to clean, working time is 120S. Press the Volume button again to stop.



## Factory Default Setting

Press the Brew button, and meanwhile insert the plug to the socket. The indicator light of buttons will Flash twice. It means the machine Come back to factory default setting.



## Cleaning

Risk of fatal electrical shock and fire.

Never immerse the appliance or part of it in water.

Be sure to unplug the machine before cleaning.

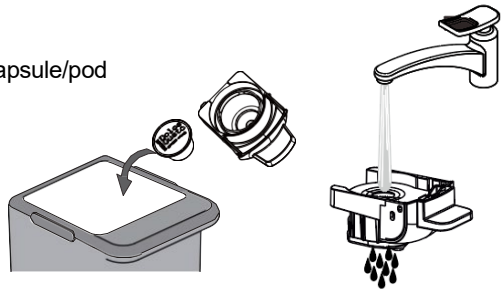
Do not use any strong cleaning agent or solvent cleaner.

Do not use sharp objects, brushes, or sharp abrasives.

Do not place in a dishwasher.

### Brewing cup cleaning

-Take out the used coffee capsule/pod



### Holistic cleaning

Dry with a fresh and clean towel, cloth or paper and reassemble all parts.

Clean the coffee outlet and inside the machine regularly with a damp cloth.



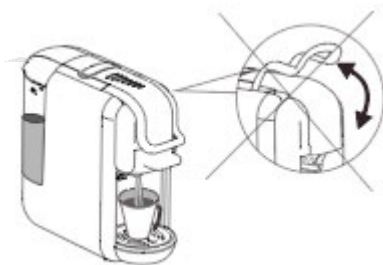
## Warning tips



Prohibit to pull water to the machine.



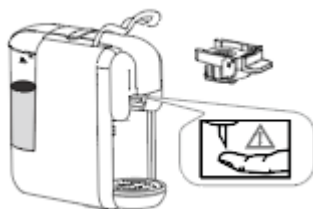
Prohibit to open the handle when brewing.



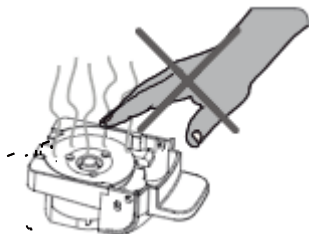
There is sharp needle upper the capsule Adaptor.

Prohibit to put the hand or finger to any part near the needle.

After the adaptor is removed.



Adaptor is still very hot after brewing. Be careful!



## Energy saving mode

The machine enters energy saving mode automatically once the machine is idle for 15 minutes, the back light of two buttons and power indicator will off.

To quite energy saving mode, please press power button, appliance will start warming up with lights blinking, when the buttons are lit steadily, the machine is ready to brew coffee.

## Decalcification / Maintenance

Drinking water varies according to region. The lime particles in hard drinking water are deposited as residues in the machine and can block the piping and cause damage. To prevent this, be sure to decalcify the machine at the very least after making 300 to 400 cups of coffee or, in any case if the output falls significantly or, after one or two months. Decalcification must be done correctly to prevent damage. So, it is essential to follow these instructions.

### **Important:**

- Never clean the machine with vinegar. This causes damage and makes your coffee taste bad.
  - Damage caused by incorrect decalcification or failure to decalcify is not covered by the guarantee.
  - Caution: beware of hot water!
1. Recommendations: Purchase commercially available decalcifier (decalcifying liquid), diluted according to the manufacturer's instructions; pour the mixture in the water tank.
  2. Make sure there is without capsule inside the machine.
  3. Place a large bowl under the dispensing head to collect the decalcification diluted and lime residues.
  4. Fill the water tank with water to maximum level mixed with decalcifying solution, make sure the solution is dissolved completely.
  5. Press the Brew button to run decalcifying water as you brew coffee normally, repeat for several times to run out the entire tank water.
  6. Repeat the process to run another tank of water mixed with decalcifying solution.
  7. Repeat the process to flush out the intern circuit with a tank of fresh water (without the decalcifying solution) to clean the internal circuit completely.



## Troubleshooting

PROBLEM	POSSIBLE CAUSE	SOLUTION
No coffee is brewed.	The water tank is empty.	- Fill water in the water tank.
The coffee is not hot enough.	<ul style="list-style-type: none"> <li>- The Cold cups / mugs.</li> <li>- Scale build-up in machine.</li> <li>- Cold machine.</li> </ul>	<ul style="list-style-type: none"> <li>- Preheat cup / mug.</li> <li>- Descale.</li> <li>- For cold machine, brewing a cup of water to warm up the circuit.</li> </ul>
Water on table.	<ul style="list-style-type: none"> <li>- Water tank is leaking.</li> <li>- Drip tray is full of water.</li> </ul>	<ul style="list-style-type: none"> <li>- Check if the valve on the water tank is in the correct position. Adjust the o-ring to the correct position.</li> <li>- Empty the drip tray.</li> </ul>
Handle can not close.	- The brewing basket is not placed well.	- Push the brewing basket into correct position.
Water leak at the ground coffee adapter.	<ul style="list-style-type: none"> <li>- Too much ground coffee (Should not put more than 15 grams).</li> <li>- The coffee is being ground too fine or had been tamped too hard.</li> <li>- Brewing Basket is clogged.</li> </ul>	<ul style="list-style-type: none"> <li>- Adjust the amount of ground coffee to be between 14-15 grams.</li> <li>- Adjust the grinding level to coarse and tamp the coffee lighter.</li> <li>- Put the "BREWING BASKET FOR GROUND COFFEE" in boiling water for 10-15 minutes.</li> </ul>
Water leaks at the coffee capsule adapter or the coffee drips too slowly or no coffee comes out.	<ul style="list-style-type: none"> <li>-The capsule type may not match the adapter.</li> <li>- The adapter is dirty or the water flow inside the adapter is clogged.</li> <li>- The capsule piercing head is worn.</li> </ul>	<ul style="list-style-type: none"> <li>- Make sure the coffee capsule matches the Adapter.</li> <li>- If the Adapter is clogged, please clean it in time.</li> <li>- Contact our service center to have the piercing head change.</li> </ul>

### NOTE:

- \* If you just brewed hot coffee, please wait a while before making the cold brew coffee, as the temperature inside the machine still high.
- \* The amount of coffee from Cold Brew mode is a bit more than Hot Brew mode, as the pressure is different.



**IMPORTANT INFORMATION FOR CORRECT DISPOSAL OF THE PRODUCT IN ACCORDANCE WITH EC DIRECTIVE 2012/19/EU.**

At the end of its working life, the product must not be disposed of as urban waste. It must be taken to a special local authority differentiated waste collection center or to a dealer providing this service. Disposing of a household appliance separately avoids possible negative consequences for the environment and health, deriving from inappropriate disposal and enables the constituent materials to be recovered to obtain significant savings in energy and resources. As a reminder of the need to dispose of household appliances separately, the product is marked with a crossed-out wheeled dustbin.