

Rohnson[®]

INNOVATE FOR LIFE



Thank you for buying a Rohnson cordless stick vacuum cleaner with digital brushless motor (BLDC)



MAMBA extreme plus

** Scan with your phone or QR reader to find out more about your machine

MAMBA extreme plus **M7**

User Manual

READ AND SAVE THESE INSTRUCTIONS

SAFETY INSTRUCTIONS

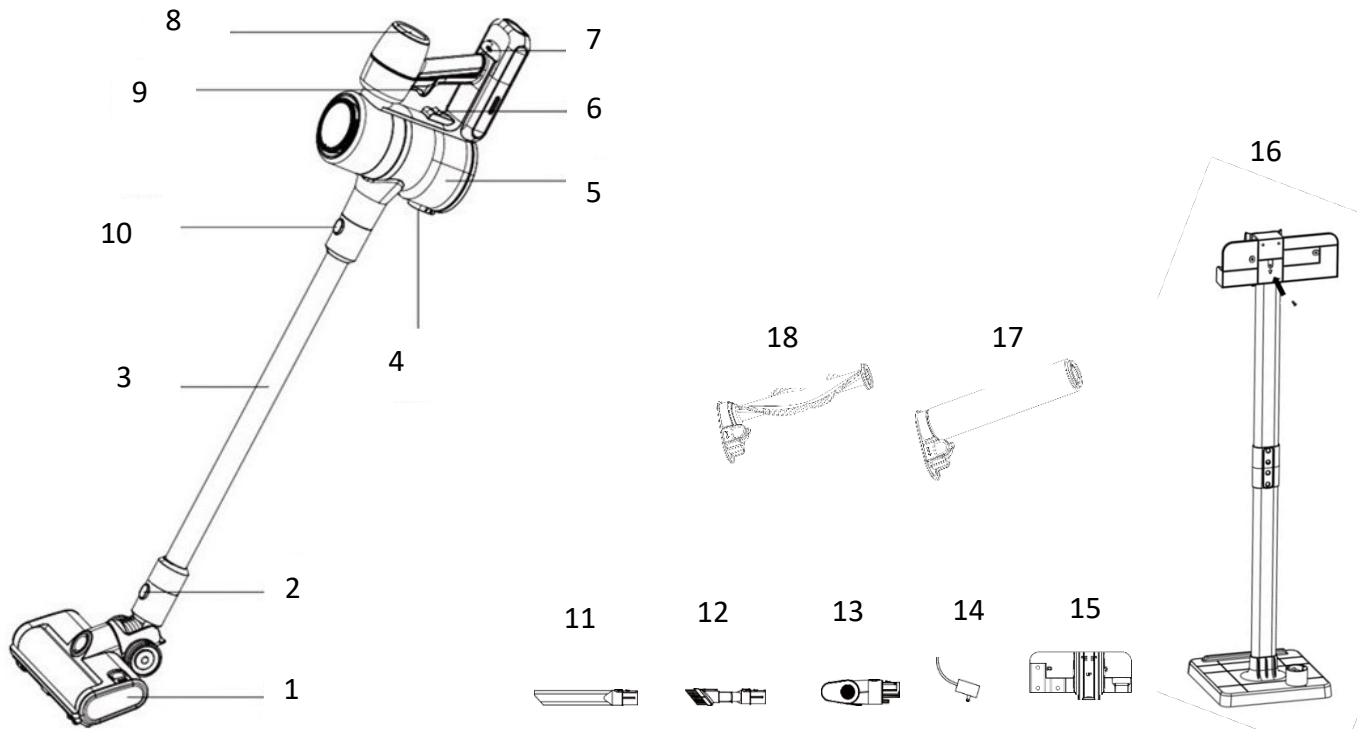
The vacuum cleaner is specially used for household purpose, please do not use it for commercial or other purposes.

1. Please don't use the vacuum cleaner to suck detergent, kerosene, glass waste, needles, cigarette ash, moisturized dust, sewage, matches, similar articles or any liquid.
2. Please do not use the vacuum cleaner to suck cement, gypsum powder, wall power and similar small particles, or toy, paper filler and other larger objects, which can cause vacuum cleaner clogging, motor burnout and another fault.
3. Please do not use the vacuum cleaner near fire source and other high temperature places.
4. When the vacuum cleaner is used, please pay attention to install HEPA and rolling brush properly before operating the unit.
5. When the vacuum cleaner is used, please note that the suction inlet cannot be clogged and rolling brush cannot be blocked, otherwise motor failure may be caused.
6. Please do not dump or splash water or other liquid into the machine, to avoid short-circuit and burn-out of machine.
7. When cleaning the vacuum cleaner filters, wash with water if recommended; when you need to use them, please install the dried filters into the vacuum cleaner. Do not use the wet filters, otherwise it may burn out the machine due to the short-circuit.
8. Please use dry cloth for cleaning vacuum cleaner, do not use gasoline, banana oil etc. otherwise shell cracking or fading will be caused. Please do not use and store the machine in extremely adverse conditions, such as extreme temperature. Use the vacuum cleaner in room temperature of 5° C~ 40° C. Please store it in a cool and dry place. Sunlight exposure for long time should be prohibited.
9. Make sure that the mains voltage matches the voltage stated on the rating label of the appliance and that the outlet is grounded.
10. Do not use the device if it has been dropped or if there are any visible signs of damage.
11. Do not try to repair the appliance by yourself. Contact our official technical support service.
12. Do not use any accessory that has not been recommended by the manufacturer, as they might cause injuries or damage.
13. Turn off and unplug the appliance from the mains supply when it is not going to be used for a long period of time, before cleaning or repairing, before attaching components and before removing the battery.
14. Never modify the charger in any way.
15. Do not use any battery that has not been provided with the original product.
16. The appliance is not intended to be used by children under the age of 12. It can be used by children over the age of 12, as long as they are given continuous supervision.
17. This appliance is not intended to be used by persons with reduced physical, sensory or mental capabilities or lack of experience or knowledge unless they have been given supervision or instruction concerning the use of the appliance in a safe way by a person responsible for their safety and understand the hazards involved.
18. Supervise young children to make sure that they do not play with the appliance. Close supervision is necessary when the appliance is being used by or near children.

BATTERY INSTRUCTIONS

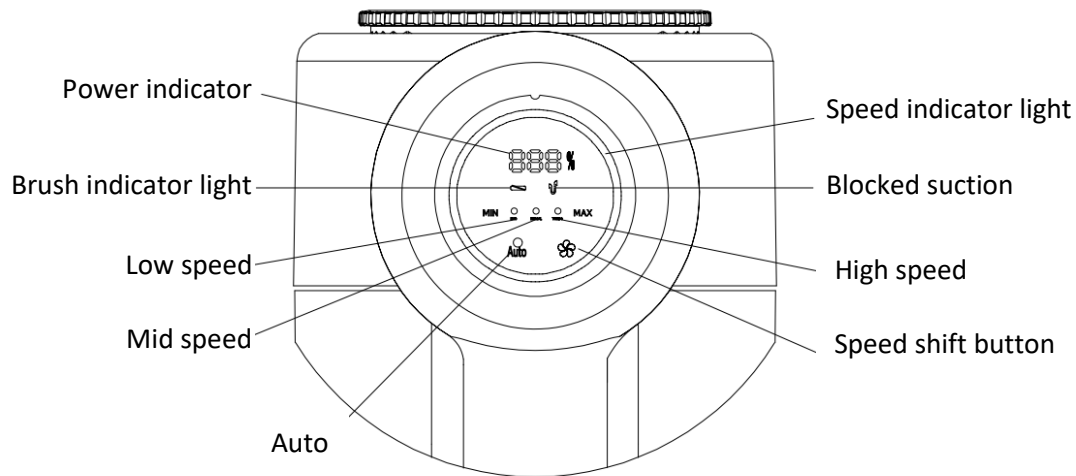
- This appliance includes Li-ion batteries, do not incinerate or expose them to high temperature, as they may explode.
- Leaks from the battery or battery cells can occur under extreme conditions. Do not touch any liquid that leaks from the battery. If the liquid gets into contact with skin, wash immediately with soap and water. If the liquid gets into the eyes, flush them immediately with clean water for a minimum of 10 minutes and seek medical attention. Wear gloves to handle the battery and dispose of immediately in accordance with local regulations.
- Avoid contact between the battery and small metallic objects such as paper clips, coins, keys, nails or screws.
- Before a new battery is used or the battery is used for the first time after long-term storage, fully charge the battery. When the device is stored and not used for long periods of time, ensure that the battery pack is fully charged and ensure that the battery is charged and discharged at least once every three months.

PRODUCT COMPONENTS



- 1. Floor power brush (it is combined with two roller brushes)
- 2. Floor brush release button
- 3. Metal tube
- 4. Dust cup empty button
- 5. Dust cup
- 6. Dust cup release button
- 7. Battery release button
- 8. Control panel
- 9. ON/OFF button
- 10. Metal tube release button
- 11. Narrow crevice tool
- 12. Combination tool
- 13. Mini power brush
- 14. Fast Charger
- 15. Wall Storage base
- 16. Floor storage base
- 17. Soft roller
- 18. Bristle roller

OPERATION PANEL



Power Indicator

It lights up when the machine is ON. It is a battery level display in %.

Auto

Auto mode is set by default and you can press it any time during operation. It automatically adjusts the suction power depending on the amount of dirt.

Speed indicator light

It can be green, blue or red depending on the speed. Green is for Auto and Low speed, blue is for Mid speed and red is for High speed.

Low speed/Mid speed/ High speed

There are 3 speeds which you can select manually depending on your cleaning needs.

Speed shift button

It controls the speed manually. You can press once, twice or three times to switch speed.

Brush indicator light

If roller is blocked, the light will flash 3 seconds after the blockage. Clear the brush roller as described in section **BRUSH ROLLER MAINTANANCE**.

Blocked suction

It lights up when there is a blockage. Check the machine for blockages in the brush roller, metallic tube, tube inlet and also check if filters and dust cup are clean. Clean any blockage before restarting the machine.

INSTALLATION OF BATTERY PACK AND CHARGING

Insert the battery in the slot located at the back side of the body. Once it is inserted, you will hear a “ click” sound. At this moment, it indicates that the battery pack is assembled.

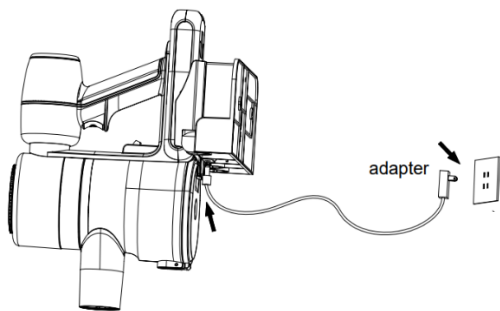
When the power indicator and the light on the battery pack flashes, it indicates that the battery is running out soon. You may charge the battery on the device or separately.

1.Charging on the device

When charging, the speed indicator light and the light on the battery pack, begin to flash.

The display will indicate the charging level (1% -100%)

When the power indicator indicates 100% it means the machine is fully charged. At this point, the battery pack and the power indicator will still be on for 5 minutes and then will go off.



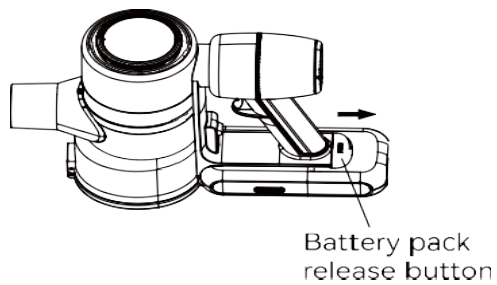
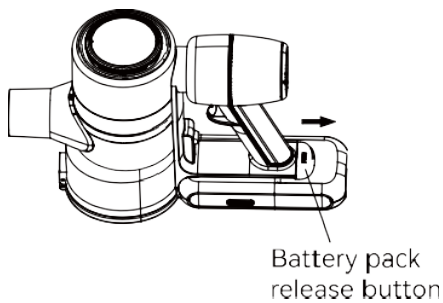
2.Charging the single battery

Press down the battery pack release button, and pull out the battery pack.

Charge the battery pack directly using the charger.

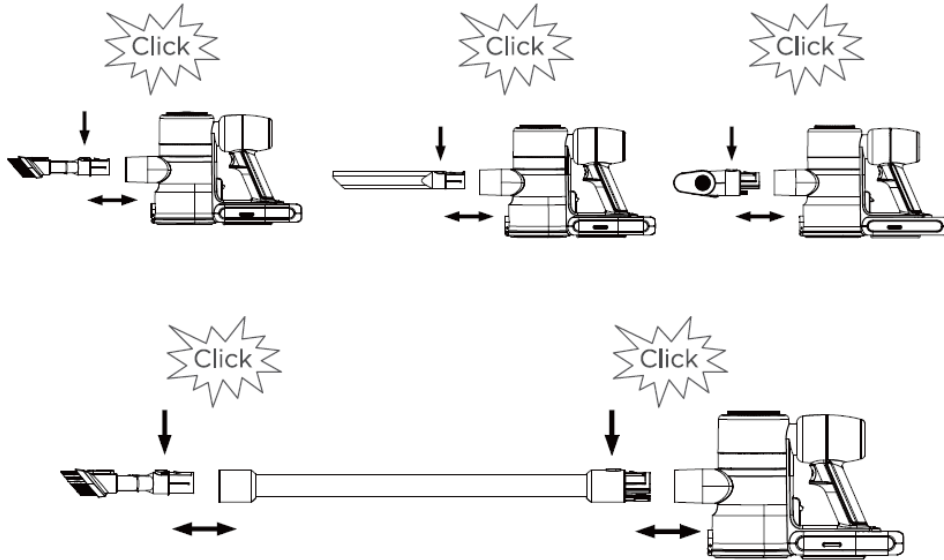
When charging the battery pack separately, the battery pack indicator light will flash until fully charged.

After charging is completed, the light on the battery pack will still be on for 5 minutes, then will go off.



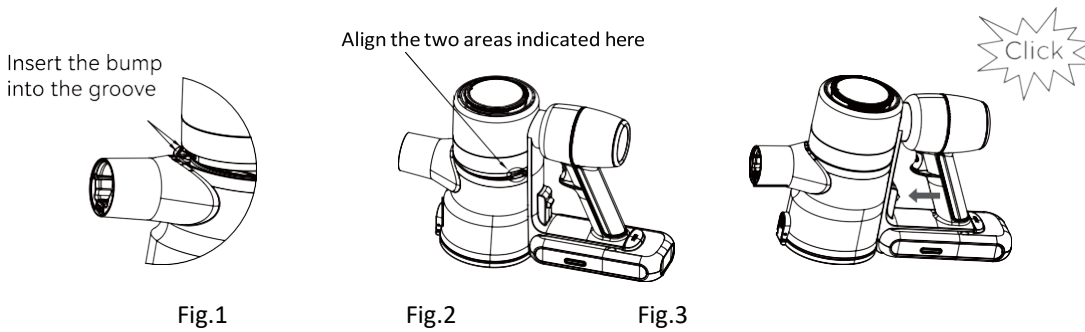
USE AS A HANDHELD VACUUM CLEANER

- 1.Assemble the dust cup onto the main body as described below on paragraph **USE AS A STICK VACUUM CLEANER**
- 2.Insert the accessory into the main body until you hear a "click".



USE AS A STICK VACUUM CLEANER

- 1.Assemble the dust cup onto the main body. Insert the bump on the front main body into the groove of the dust cup as indicated in the below figure 1, and then align the rear main body and the dust cup as indicated in figure 2. Push the dust cup assembly and the main body to lock together when hearing a "click" (figure 3).



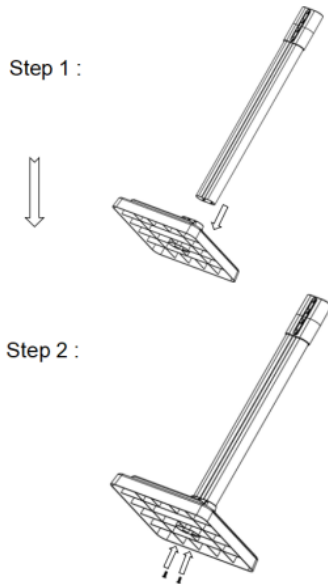
- 2.Assemble the metal tube and the motorized floor brush. Insert the metal tube into the main body until you hear a "click" and then insert the motorized floor brush into the head of the metal tube until you hear a "click".



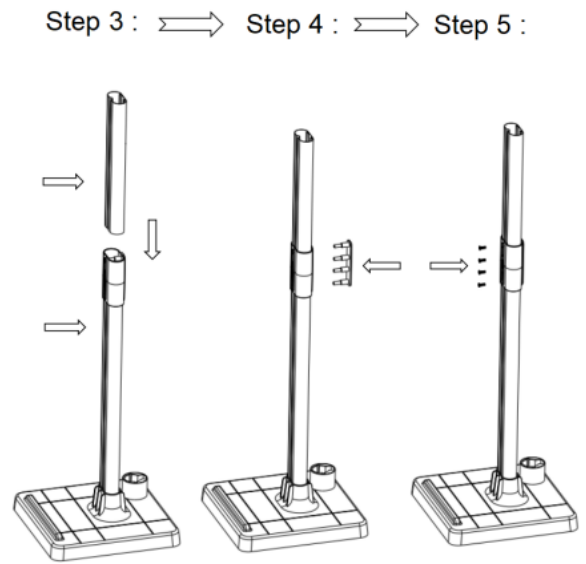
- 3.The device includes two different rollers that allow cleaning different types of surfaces, the soft roller which is suitable for all types of floors (especially for wooden floors) and the bristle roller which is suitable for carpets. Both of them are interchangeable and are used with the floor power brush for the upright vacuum cleaner.

FLOOR STORAGE BASE INSTALLATION

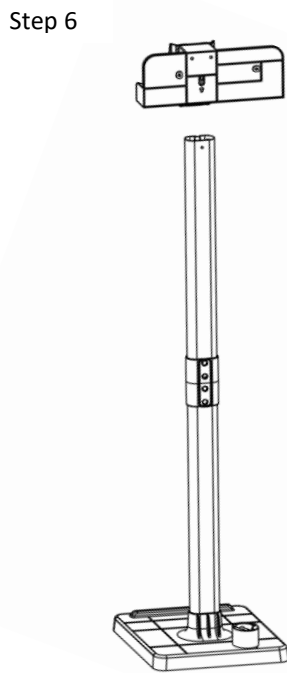
Fit the metal tube into the floor base and secure it with two screws



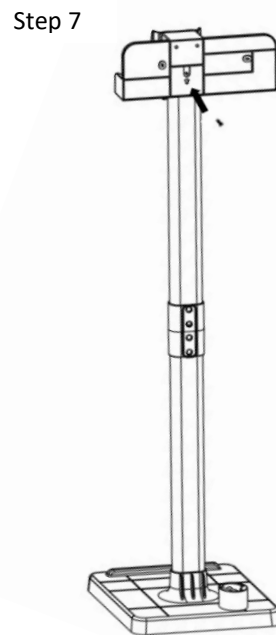
Insert a second metal tube, then insert the cover plate from the rear and secure it with four screws (note : the slot in the metal tube is on the front side)



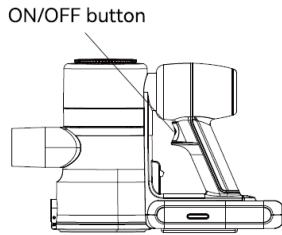
Press the storage rack head assembly into the metal tube and secure it with two screws



Finally, insert the attachment clip into the floor rack to complete the installation.



OPERATION METHOD



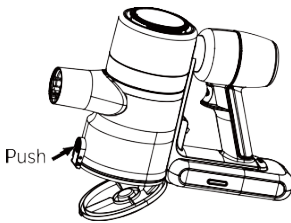
Press the switch button, the machine works in the automatic speed by default. The gear display light will be green.

You can exit the AUTO mode and control speed manually through the speed shift button as follows:

- Press one time to turn to Low speed (runtime up to 55min). The gear display light will be green
 - Press two times to turn to Mid speed (runtime up to 20min). The gear display light will be blue
 - Press three times to turn to High speed (runtime up to 10 min). The gear display light will be red
- When the machine is working in any speed press the AUTO key and the machine will turn to AUTO mode .
When the machine is working in any mode, press the switch button, and the machine will stop working.

EMPTY THE DUST CUP

You must empty the dust cup regularly. The dirt inside the dust cup must not exceed the MAX level. Push the button to empty the dust cup.



CLEANING OF FILTERS

When the filters are blocked due to excessive dust, it needs to be cleaned or washed, if necessary, they can also be replaced. It is suggested to clean the filters regularly (at least twice a month) to ensure maximum efficiency. They can be cleaned with water. It is suggested to replace the filters at least once a year. Both cleaning and replacement depends on use. More frequent cleaning may be required when vacuuming fine dust or using the machine intensively.

- 1.Rotate the HEPA filter cover counterclockwise (Fig.4) and take out the HEPA filter (Fig.5)
- 2.Press the dust cup release button to separate the dust cup and the handle module (Fig.6)

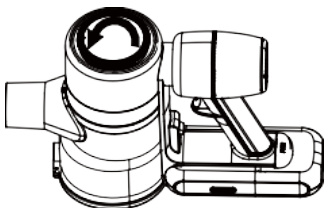


Fig.4

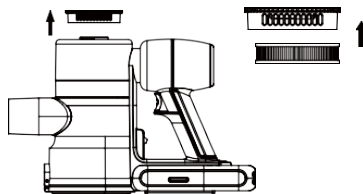


Fig.5

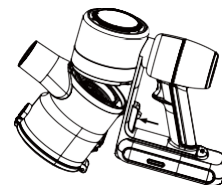


Fig.6

3. Take out the filters (Fig.7), rotate the cyclone counterclockwise (Fig.8) and take out the cyclone (Fig.9)

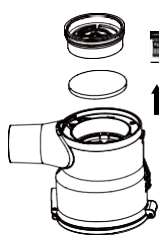


Fig.7

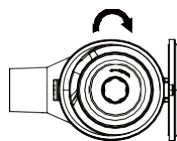


Fig.8

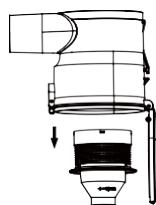


Fig.9

4. Tap the filters to remove excessive dust and wash with water, if necessary. It is important to wash the filter with cold water only, under a running tap. Repeat washing the filters until clean water runs. Do not immerse into water. Tap the filter to remove any excess water and leave to dry completely. Allow the filters to dry completely in a dry area with good air circulation for at least 24 hours, away from direct sunlight, heat sources like heating appliances etc. Make sure the filters are completely dry before installing them.

CAUTION:

Do not clean the filters in a washing machine.

Do not use a hair dryer to dry them.

Never use the appliance without filters

5. Put the cyclone (Fig.10) and the filters back into the dust cup (Fig.12)

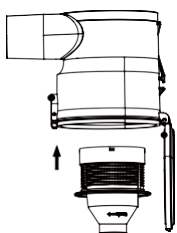


Fig.10

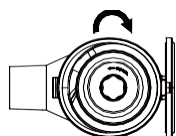


Fig.11

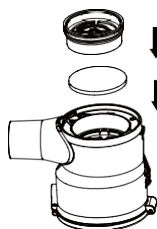


Fig.12

6. Assemble the HEPA (Fig.13). Rotate the HEPA filter cover to lock the cyclone. (Fig.15)

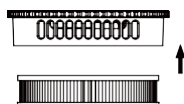


Fig.13

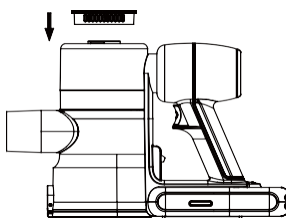


Fig.14

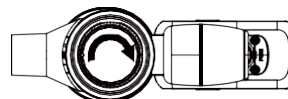


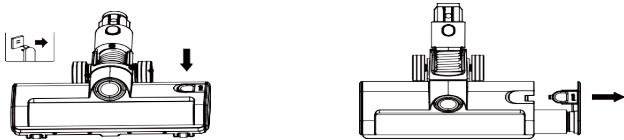
Fig.15

BRUSH ROLLER MAINTENANCE

Check regularly the brush roller for blockages. If the brush indicator on the operation panel lights up it means the brush roller is blocked. To clear proceed as follows:

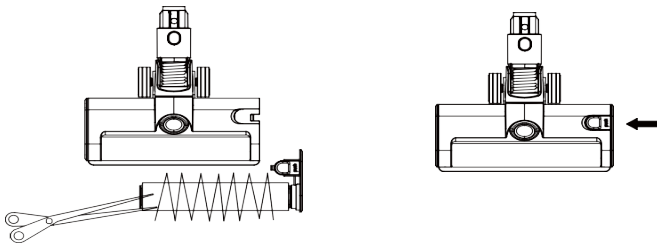
Disconnect the floor power brush and press down the brush roller release button as shown below.

Pull out the brush roller.





Clean the hair and other foreign objects on the brush roller.

Insert the brush roller back into the floor brush and lock it to the other side firmly.



MINI MOTORIZED BRUSH MAINTENANCE

Check regularly the brush roller for blockages. To clear proceed as follows:



Press the button and rotate towards the "unlock" direction . Pull out the brush roller and clean the foreign objects same as the above brush roller. Insert the brush roller back into the floor brush and lock it. 

Note: please push the tube connector side at upright position before pushing the button.



TROUBLESHOOTING

The following points should be firstly checked before you address to the service repair department:

Failure	Possible reason	Solution
The motor does not operate.	<ul style="list-style-type: none"> ● No battery. ● Tube, floor power brush, battery pack and hand-held vacuum cleaner are not assembled in place. 	<ul style="list-style-type: none"> ● Charge the vacuum cleaner. ● Check that the components and the hand-held vacuum cleaner are assembled correctly.
Suction power level is very low.	<ul style="list-style-type: none"> ● Dust bin is full. ● Filters are dirty or blocked. ● Air inlet of tube or power brush are blocked. 	<ul style="list-style-type: none"> ● Empty the dust bin. ● Clean the filters. ● Clean the dirt and remove any object that blocking the airflow inside the tube and power brush.
 Blocked suction	<ul style="list-style-type: none"> ● Dust bin is full ● Filters are dirty or blocked ● Air inlet of tube or power brush are blocked. Power brush are blocked. 	<ul style="list-style-type: none"> ● Empty the dust bin. ● Clean the filters. ● Clean the dirt and remove any object that blocking the airflow inside the tube and power brush.
 Brush indicator light	<ul style="list-style-type: none"> ● Power brush is blocked. 	<ul style="list-style-type: none"> ● Check that the brush roller is correctly fitted and remove any dirt, hair or object that is blocking it.
The operating time is not enough after charging.	<ul style="list-style-type: none"> ● It has not been enough charged. ● Battery is damaged or too old. 	<ul style="list-style-type: none"> ● Charge the battery fully as directed in the charging section. ● Replace the battery.

Note: For any further doubt, please contact the nearest authorized service department of our company.

TECHNICAL SPECIFICATIONS:

MODEL: Rohson mamba extreme plus M7

BATTERY: Li-Ion 25,2V 2500mAh, 7 battery cells

TOTAL POWER: 370W

DIGITAL MOTOR (BLDC motor)



IMPORTANT INFORMATION FOR CORRECT DISPOSAL OF THE PRODUCT IN ACCORDANCE WITH EC DIRECTIVE 2002/96/EC.

At the end of its working life, the product must not be disposed of as urban waste. It must be taken to a special local authority differentiated waste collection center or to a dealer providing this service. Disposing of a household appliance separately avoids possible negative consequences for the environment and health, deriving from inappropriate disposal and enables the constituent materials to be recovered to obtain significant savings in energy and resources. As a reminder of the need to dispose of household appliances separately, the product is marked with a crossed-out wheeled dustbin.